



Permanent edition

Tamamura Town

Be prepared for various disasters

Image of Tone River and Karasugawa River at ordinary times

Disaster Preparedness General Map

Picture provided by Upper Tone River Office, Ministry of Land, Infrastructure, Transport, and Tourism

Measures against Storm and Flood Disasters

"Storm and flood disasters" refers to the types of natural disasters caused by strong wind, heavy rain, flooding, etc., which cause major damage nationwide every year. To protect ourselves from storm and flood disasters, we need to have accurate knowledge about various natural phenomena, become familiar with their dangers, and learn during ordinary times the actions to take in the event of disasters.

Types of Inundation

Rainfall Inundation

Flooding of buildings, land, and roads in urban areas caused by rainwater overflowing from gutters and drainage channels. Caution is needed since flooding could start soon after the start of rainfall.

River Inundation

Inundation caused by river water overflowing from or demolishing embankments, flooding houses and farmland, etc. When river inundation occurs, a large amount of water flows in and floods a wide area and takes a long time to subside.

Heavy rains and strong winds have caused major disasters many times. Pay close attention to weather information on a regular basis, and cooperate with other people during evacuation.

Special Warning A Special Warning is announced when a once-in-a-decade catastrophe is expected to occur. If you have not evacuated from a danger zone, ensure your safety immediately.

Warning	A Warning is announced when there is a threat of a serious disaster.
Advisory	An Advisory is announced when there is a threat of a disaster. Check your evacuation actions with the disaster response map, etc.

5 Levels of Alert

Alert Level	Advised Actions for Residents	Evacuation Information
5	Take the best course of action to protect your own life	Emergency safety measures (issued by Tamamura Town)
4	All must evacuate from hazardous spots	Evacuation order (issued by Tamamura Town)
3	Elderly evacuation from danger zones	Evacuation order for the elderly (issued by Tamamura Town)
2	Check evacuation route on hazard map	Flood Advisory Heavy Rain Advisory, etc. (issued by Japan Meteorological Agency)
1	Pay attention to the latest information	Early advisory information (issued by Japan Meteorological Agency)

Alert Level ↑

Measures against Storm and Flood Disasters

Typhoons

A tropical cyclone is a low-pressure system that develops over tropical seas. Among these, those that exist in the Northwest Pacific or South China Sea and have maximum wind speed (10-minute average) of approximately 17 m/s (34 knots, wind force 8) or higher within their cyclone areas are called typhoons.

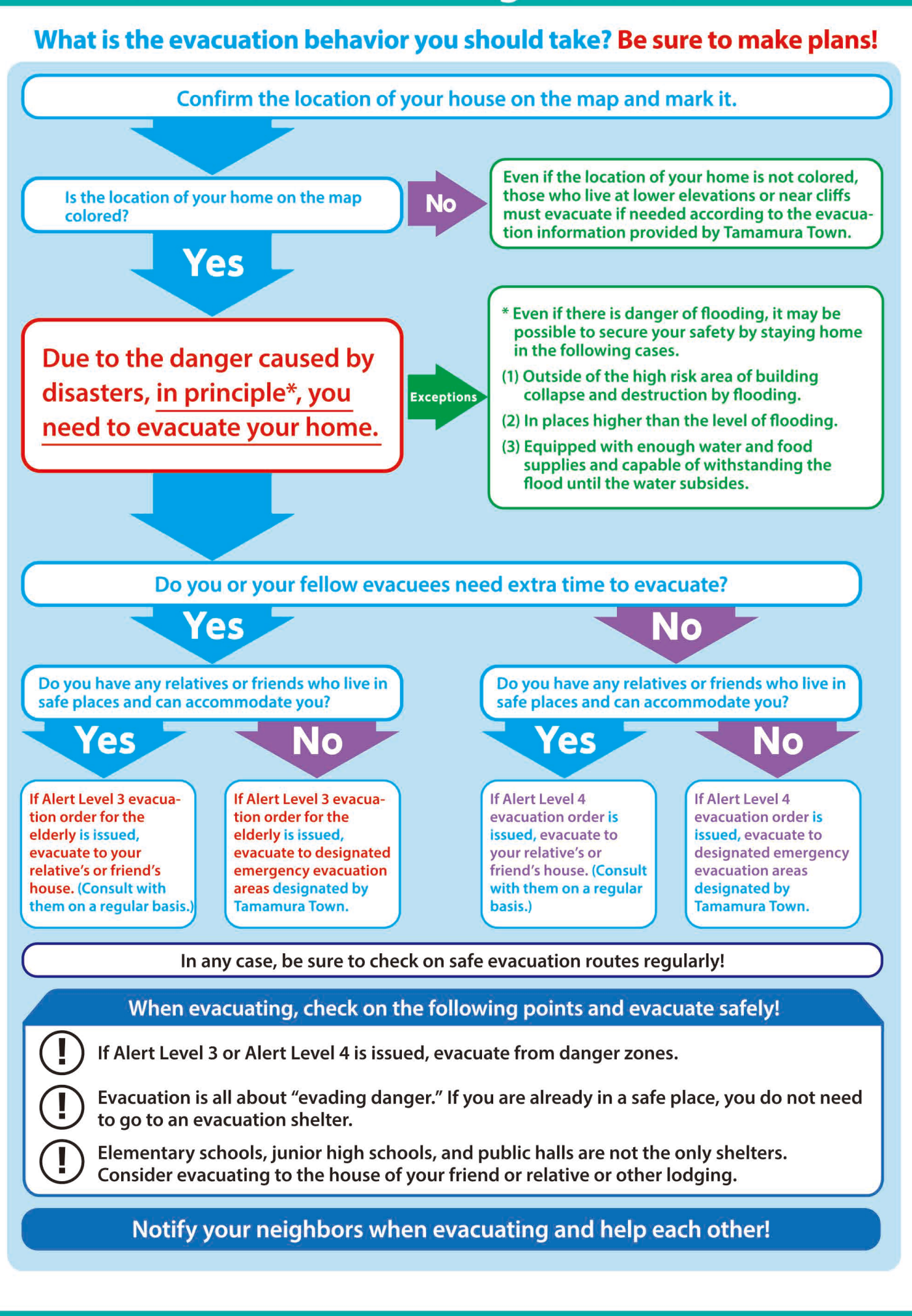
Preparing for Typhoons

Information Equivalent to Alert Level

Equivalent to	Disaster Response/Weather Information (Information Equivalent to Alert Level)	
	Information on Flooding (Rivers)	Weather Information
5	Inundation occurrence information	Special Heavy Rain Warning (landslides)
4	Inundation Risk Information	Landslide Alert Information
3	Inundation Alert Information Flood Warning	Heavy Rain Warning
2	Inundation Advisory Information	-
1	-	-

Alert Level ↑

Evacuation Action Judgment Flow Chart



Protecting yourself from disasters!

- Know natural disasters that occur in Japan**
 Japan has a lot of natural disasters (earthquakes, tsunami, typhoons, heavy rain, etc.). From June to October, we experience increased amount of typhoons and heavy rain. In times of disasters, we cannot maintain our usual life.
 - Transportation (trains and buses) stops
 - Electricity and/or gas stops
 - Water stops
- Prepare before a disaster strikes**
 In order to minimize the damage, prepare before a disaster strikes.
Preparation you can do on your own
 - Prepare items to take with you on your evacuation
 - Secure furniture so it will not topple over
 - Prepare food and water**Preparation that local communities can do**
 Community interaction leads to help in times of disasters. Try to go to the community disaster drills (evacuation training) and volunteering.
- Check disaster information**
 There are websites and apps where you can find information on disasters. Make sure to favorite/install them on your smartphone (cellphone). We know beforehand when a typhoon comes.
- Evacuate safely**
 When a disaster strikes, if you are in a dangerous place, make sure to move to a safer place. A place to evacuate to is usually a public facility such as an elementary school or junior high school.
 - Check how you can safely evacuate in this pandemic era.

In times of an earthquake/tsunami

If you feel an earthquake near an ocean, move to a higher place.

In times of heavy rain

Stay away from rivers (near water) and cliffs.

 - Make sure to check for a nearby evacuation shelter.
 - Town halls sometimes have information in a variety of languages available. Check the information before a disaster strikes.

In Times of Disasters!

- Check the information on the disaster
- Move to a safer place

Websites and apps you can check information on

Japan Meteorological Agency Disaster information website
<https://www.data.jma.go.jp/multi/index.html?lang=jp>

Disaster information Safety tips
 Download here

Japan Official Travel App
 Download here
<https://www.jnto.go.jp/smartapp/eng/about.html>

Earthquakes and tsunami

- Information on earthquakes and tsunami (When a large earthquake occurs in the ocean, watch out for tsunami.)**
 - Japan Meteorological Agency **WEB** Earthquake information
 - Safety tips **APP** Earthquake information
 - Japan Meteorological Agency **WEB** Tsunami Warnings and Advisories
 - Japan Official Travel App **APP** Safety Assistance > Earthquakes

In Times of Disasters!

Typoons, heavy rain, heavy snow

- Information on wind, rain, and snow**
 - Japan Meteorological Agency **WEB** Weather warnings and advisories, Movement of rain clouds
 - Safety tips **APP** Weather warnings, evacuation orders, etc.
 - Japan Official Travel App **APP** Safety Assistance > Weather Warnings
- Danger level of landslides, inundation, floods**
 - Japan Meteorological Agency **WEB** Distribution of danger levels: landslides, inundation, floods
- When you are in need of help or wish to move to a safe place**
 - Ask for help in Japanese
 - Safety tips **APP** Communication cards
 - Japan Official Travel App **APP** Safety Assistance > Communication Cards
 - Evacuation shelters
 - Safety tips **APP** Evacuation order > Evacuation shelter information
 ▶ Open the "Japan Evacuation Shelter Guide" app
 - Japan Official Travel App **APP** Safety Assistance > Emergency Shelters
 - Trains and transportation
 - Japan Safe Travel Information **WEB** <https://www.japan.travel/en/news/JapanSafeTravel/>

Things to Take with You and Keep Stock for Emergency

Things to take with you in an emergency (examples)
 Prepare and inspect on a daily basis so that you can take them with you in times of crisis.

- Smartphone: Cellphone/smartphone, Battery charger for cellphone and smartphone, Mobile battery
- Emergency medical supplies: Infectious disease prevention (Medical masks, Hand sanitizer, Thermometer), First-aid kit, Household medicines (for chronic disease, etc.)
- Emergency food: Food you can eat without the use of fire (Drinking water, Canned food, Candies, chocolate)
- Lighting equipment: LED lantern, Flashlight, Batteries (prepare extra)
- Others: Cash (more change than bills), Spare clothes, Wet wipes, Toothbrush, Indoor shoes, Towels, Plastic wrap (for stopping bleeding and covering tableware), Disposable chopsticks, Paper dishes and paper cups, Plastic bags, Ear plugs and eye masks, Portable toilet, Sanitary items, Baby goods (milk, baby food, diapers, etc.), Contact lenses and glasses, Dentures and hearing aids, Backpack

Things to keep in stock for an emergency (examples)
 Stock enough goods to last for a few days (3 days minimum, 7 days recommended) until recovery from the disaster.

- Drinking water: Drinking water (3L/person/day is the estimated standard amount), Water storage tank, etc.
- Emergency food: Rice (Processed quick-cooking types comes in handy), Canned food and ready-to-eat food, Pickled plums, seasonings, Dried food, candies, chocolate (snacks, etc.)
- Fuel: Gas cartridge, Gas cartridges, Solid fuel
- Others: Domestic water (store in bathtub, etc.), Blankets, sleeping bags, toiletries, Cooking utensils (pots, kettle, etc.), Buckets, various outdoor equipment, Portable toothbrush and shaving set, etc.

Prepare for home evacuation with circulative stockpiling
 Circulative stockpiling is a method of stocking a certain amount of food at home at all times. Buy a little extra food regularly, eat older food first and make additional purchases for what has been consumed. That way, the stockpile won't go to waste and you can eat the food you are used to as emergency food during disasters.

Evacuation with pets
 Pet accompanied evacuation must be done in accordance with the rules of each shelter. Keep distance from the space where other evacuees live, and owners must take responsibility in taking care of the animals by keeping them tied to designated areas or put in cages you brought.

Purchase → **Stock** → **Eat**

Keep a stock of the food you are used to!

Preparation in the event of a disaster
 Be considerate to people around you since there could be a variety of people at the shelter who don't like animals or are allergic to them. Make sure to microchip your pet and register your (the owner's) information.

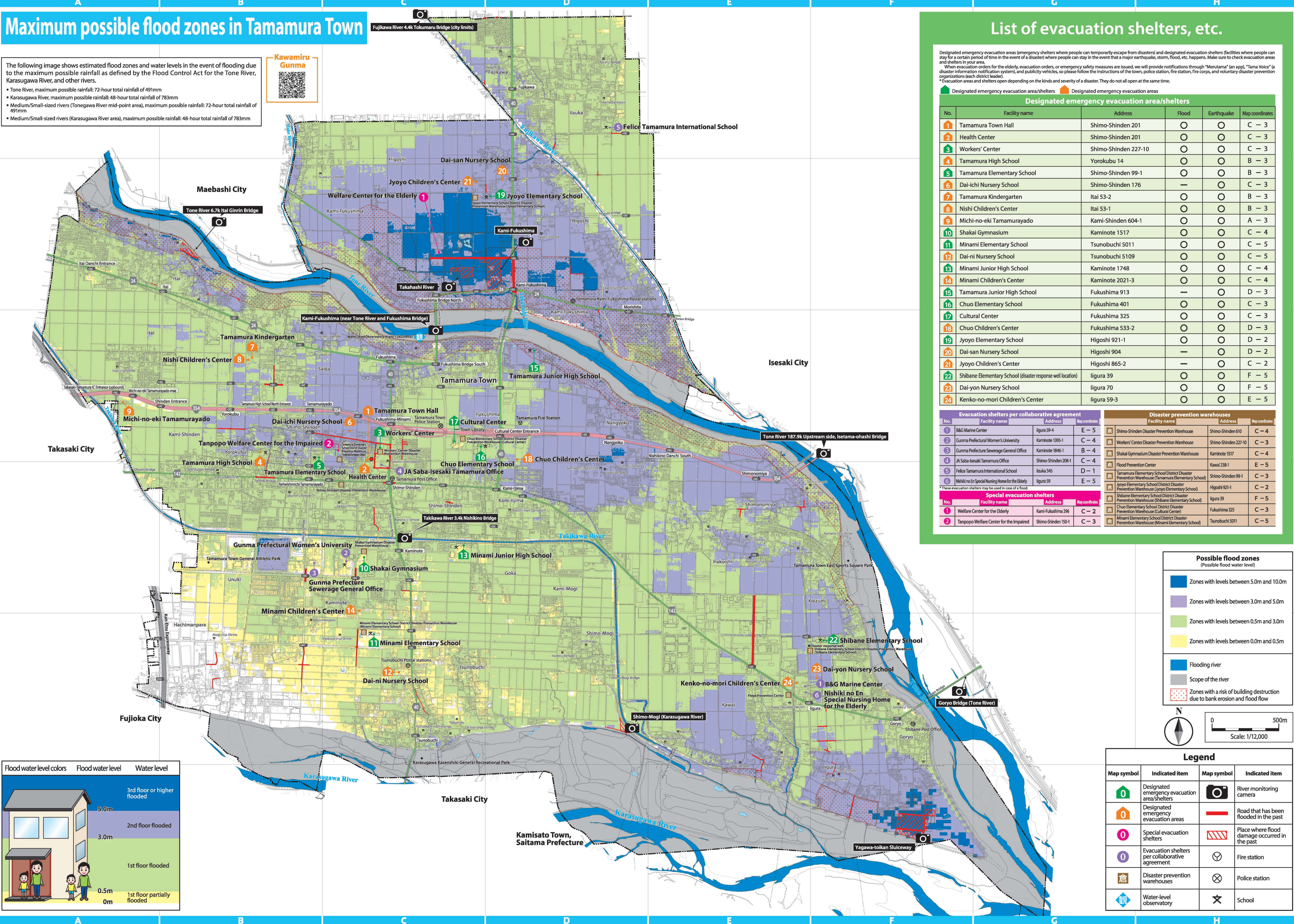
Training and health care for pets
 Have them get used to cages and carrying bags, and train them so they can evacuate. As relief supply for pets may take longer to get to the shelter, it would be a good idea to have 5 days worth more than 7 days, if possible of goods.

Emergency goods and stockpile
 Prepare food, leashes, carrying bags, and other goods that will be necessary to keep them in advance and bring them when you evacuate.

Maximum possible flood zones in Tamamura Town

The following image shows estimated flood zones and water levels in the event of flooding due to the maximum possible rainfall as defined by the Flood Control Act for the Tone River, Karasugawa River, and other rivers.

- Tone River, maximum possible rainfall: 72-hour total rainfall of 491mm
- Karasugawa River, maximum possible rainfall: 48-hour total rainfall of 783mm
- Medium/Small-sized rivers (Tonegawa River mid-point area), maximum possible rainfall: 72-hour total rainfall of 491mm
- Medium/Small-sized rivers (Karasugawa River area), maximum possible rainfall: 48-hour total rainfall of 783mm



List of evacuation shelters, etc.

Designated emergency evacuation areas (emergency shelters where people can temporarily escape from disasters) and designated evacuation shelters (facilities where people can stay for a certain period of time in the event of a disaster) where people can stay in the event of a major earthquake, storm, flood, etc. happens. Make sure to check evacuation areas and shelters in your area.

When evacuation orders for the elderly, evacuation orders, or emergency safety measures are issued, we will provide notifications through "Merutama" (an app), "Tama Voice" (a disaster information notification system), and publicity vehicles, so please follow the instructions of the town, police station, fire station, fire corps, and voluntary disaster prevention organizations (each district leader).

*Evacuation areas and shelters open depending on the kinds and severity of a disaster. They do not all open at the same time.

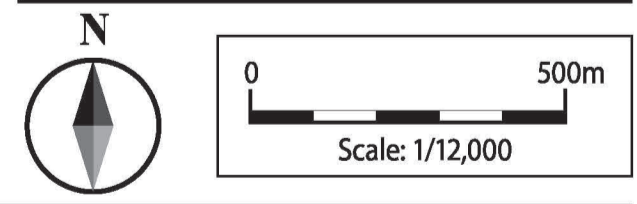
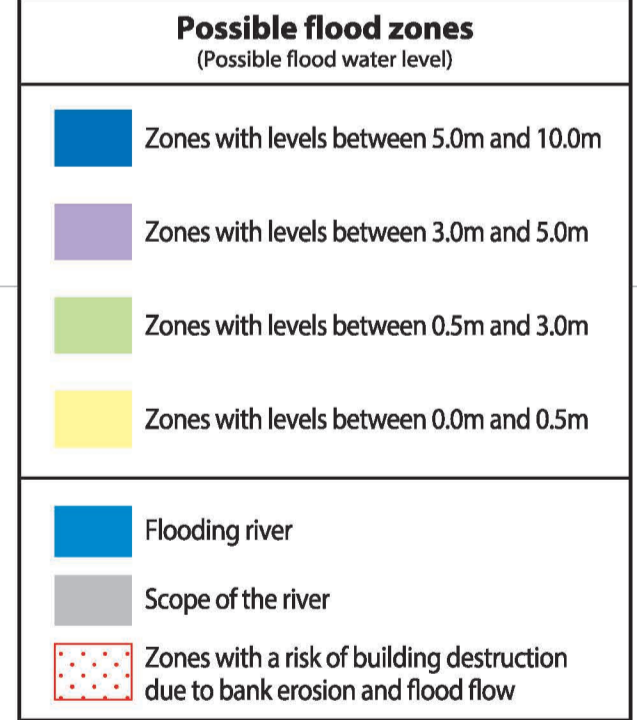
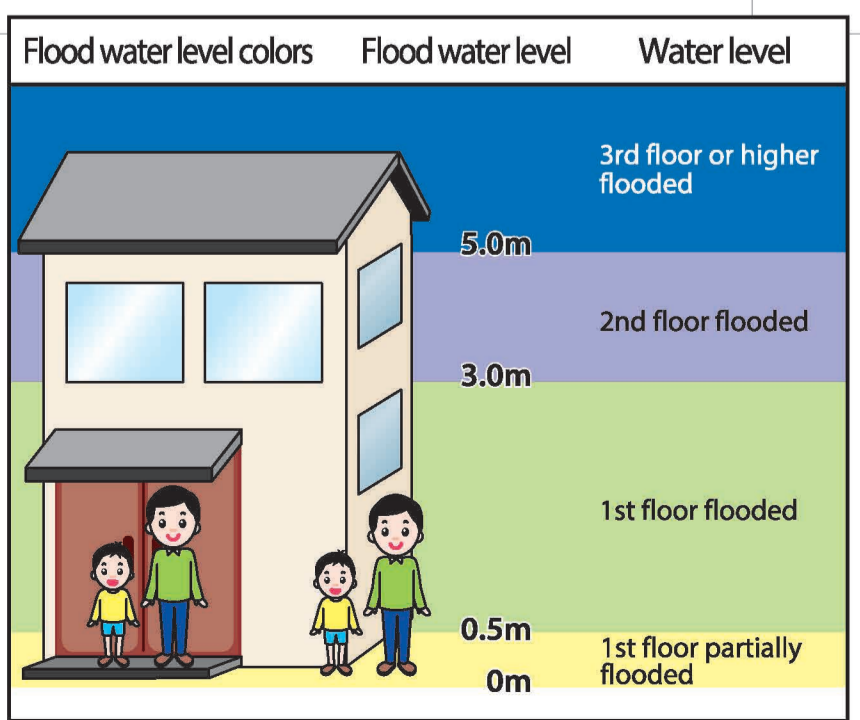
Designated emergency evacuation area/shelters		Designated emergency evacuation area/shelters			
No.	Facility name	Address	Flood	Earthquake	Map coordinates
1	Tamura Town Hall	Shimo-Shinden 201	○	○	C - 3
2	Health Center	Shimo-Shinden 201	○	○	C - 3
3	Workers' Center	Shimo-Shinden 227-10	○	○	C - 3
4	Tamura High School	Yorokubu 14	○	○	B - 3
5	Tamura Elementary School	Shimo-Shinden 99-1	○	○	B - 3
6	Dai-ichi Nursery School	Shimo-Shinden 176	—	○	C - 3
7	Tamura Kindergarten	Itai 53-2	○	○	B - 3
8	Nishi Children's Center	Itai 53-1	○	○	B - 3
9	Michi-no-eki Tamamurayado	Kami-Shinden 604-1	○	○	A - 3
10	Shakai Gymnasium	Kaminote 1517	○	○	C - 4
11	Minami Elementary School	Tsunobuchi 5011	○	○	C - 5
12	Dai-ni Nursery School	Tsunobuchi 5109	○	○	C - 5
13	Minami Junior High School	Kaminote 1748	○	○	C - 4
14	Minami Children's Center	Kaminote 2021-3	○	○	C - 4
15	Tamura Junior High School	Fukushima 913	—	○	D - 3
16	Chuo Elementary School	Fukushima 401	○	○	C - 3
17	Cultural Center	Fukushima 325	○	○	C - 3
18	Chuo Children's Center	Fukushima 533-2	○	○	D - 3
19	Jyoyo Elementary School	Higoshi 921-1	○	○	D - 2
20	Dai-san Nursery School	Higoshi 904	—	○	D - 2
21	Jyoyo Children's Center	Higoshi 865-2	—	○	C - 2
22	Shibane Elementary School (disaster response well location)	Iigura 39	○	○	F - 5
23	Dai-yon Nursery School	Iigura 70	○	○	F - 5
24	Kenko-no-mori Children's Center	Iigura 59-3	○	○	E - 5

Evacuation shelters per collaborative agreement			
No.	Facility name	Address	Map coordinates
1	B&G Marine Center	Iigura 59-4	E - 5
2	Gunma Prefectural Women's University	Kaminote 1355-1	C - 4
3	Gunma Prefecture Sewerage General Office	Kaminote 1846-1	B - 4
4	JA Saba-Isesaki Tamamura Office	Shimo-Shinden 208-1	C - 4
5	Felice Tamamura International School	Iizuka 345	D - 1
6	Nishiki no En Special Nursing Home for the Elderly	Iigura 59	E - 5

Disaster prevention warehouses			
No.	Facility name	Address	Map coordinates
1	Shimo-Shinden Disaster Prevention Warehouse	Shimo-Shinden 610	C - 4
2	Workers' Center Disaster Prevention Warehouse	Shimo-Shinden 227-10	C - 3
3	Shakai Gymnasium Disaster Prevention Warehouse	Kaminote 1517	C - 4
4	Flood Prevention Center	Kawai 238-1	E - 5
5	Tamura Elementary School District Disaster Prevention Warehouse (Tamura Elementary School)	Shimo-Shinden 99-1	C - 3
6	Jyoyo Elementary School District Disaster Prevention Warehouse (Jyoyo Elementary School)	Higoshi 921-1	C - 2
7	Shibane Elementary School District Disaster Prevention Warehouse (Shibane Elementary School)	Iigura 39	F - 5
8	Chuo Elementary School District Disaster Prevention Warehouse (Cultural Center)	Fukushima 325	C - 3
9	Minami Elementary School District Disaster Prevention Warehouse (Minami Elementary School)	Tsunobuchi 5011	C - 5

*These evacuation shelters may be used in case of a flood.

Special evacuation shelters			
No.	Facility name	Address	Map coordinates
1	Welfare Center for the Elderly	Kami-Fukushima 296	C - 2
2	Tanpopo Welfare Center for the Impaired	Shimo-Shinden 150-1	C - 3



Legend			
Map symbol	Indicated item	Map symbol	Indicated item
	Designated emergency evacuation area/shelters		River monitoring camera
	Designated emergency evacuation areas		Road that has been flooded in the past
	Special evacuation shelters		Place where flood damage occurred in the past
	Evacuation shelters per collaborative agreement		Fire station
	Disaster prevention warehouses		Police station
	Water-level observatory		School